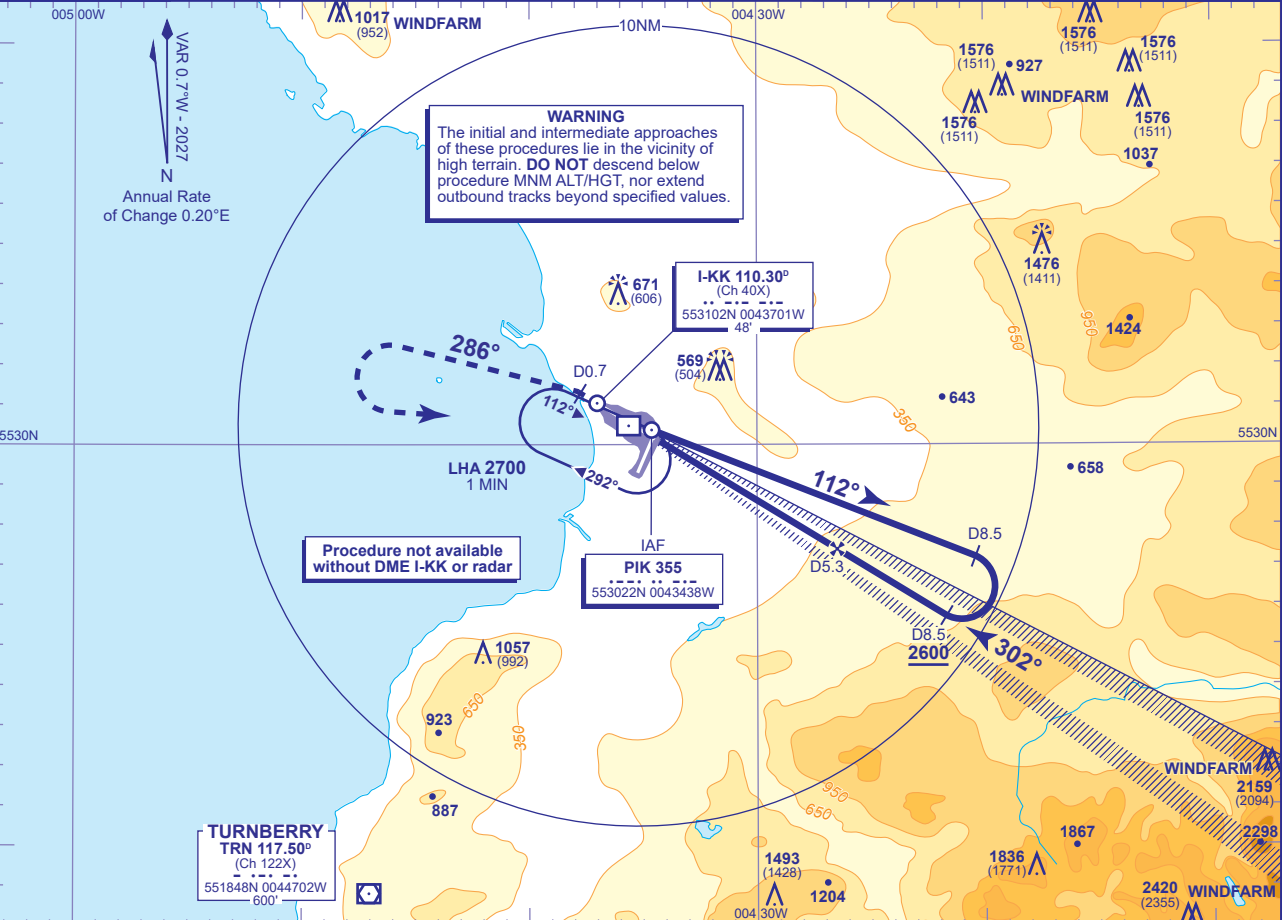


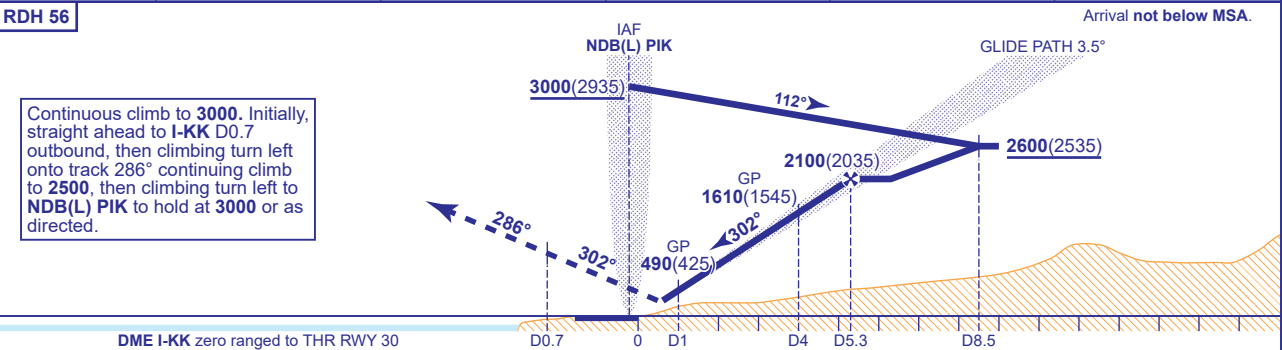
INSTRUMENT APPROACH CHART - ICAO

PRESTWICK
ILS/DME/NDB(L)
RWY 30
(ACFT CAT A,B)
SHORT PROCEDURE

	APP	129.450	PRESTWICK APPROACH	AD ELEVATION	65	TRANSITION ALTITUDE 6000
	TWR	118.150, 127.155	PRESTWICK TOWER	THR ELEVATION	65	
	RAD	129.450, 124.630	PRESTWICK RADAR	OBSTACLE ELEVATION	2420 AMSL (2355) (ABOVE THR)	
	ATIS	121.130	PRESTWICK INFORMATION	BEARINGS ARE MAGNETIC		



RECOMMENDED PROFILE GLIDE PATH 3.5°, 370FT/NM					
DME I-KK	5	4	3	2	1
ALT(HGT)	1980(1915)	1610(1545)	1240(1175)	860(795)	490(425)



DME I-KK zero ranged to THR RWY 30					
Aircraft Category	A	B	Rate of descent	G/S KT	FT/MIN
OCA (OCH)	CAT I	294(229)	307(242)	160	140
VM(C)OCA (OCH AAL)	Total Area	800(735)	900(835)	120	100
	SW of RWY 12/30	640(575)	710(645)	80	60

NOTE Procedure only available with prior approval from ATC.

CHANGE (12/25): NE MSA, MAG VAR, MAG HEADINGS.